

# MARCH 2025 NEWSLETTER

---



## SAFETY CDM'S LATEST INSIGHTS & COMPLIANCE TIPS: MARCH EDITION

This month, we highlight the importance of designing for demolition as a key step toward true sustainability, the value of going beyond basic compliance, and how site audits can strengthen your safety culture. Whether you're looking to enhance sustainability in construction or improve site efficiency, we've got valuable insights to help. This edition includes essential resources to support your projects, including a free Permit to Work download and expert guidance to keep your sites safe, compliant, and future-ready. You'll also find links to our latest blogs, covering crucial topics like slips, trips, and falls—one of the most common causes of workplace injuries.



## LOOKING AHEAD: DESIGNING FOR DEMOLITION

When buildings are constructed, little thought is given to how they will eventually be dismantled. Unlike industries such as automotive and aviation—where products are designed for reuse and recycling—the construction sector often overlooks demolition planning.

Incorporating design for demolition could revolutionise sustainability in the industry. By planning for disassembly from the outset, materials like steel, glass, and timber can be reused, reducing landfill waste and cutting carbon emissions. Emerging technologies, such as microchipping building materials, can further aid in efficient recycling and resource recovery.

For this shift to happen, government policies, planning regulations, and early collaboration with demolition experts are essential. The industry is making progress, but for true sustainability, we must rethink how we design, build, and eventually deconstruct our structures.

---

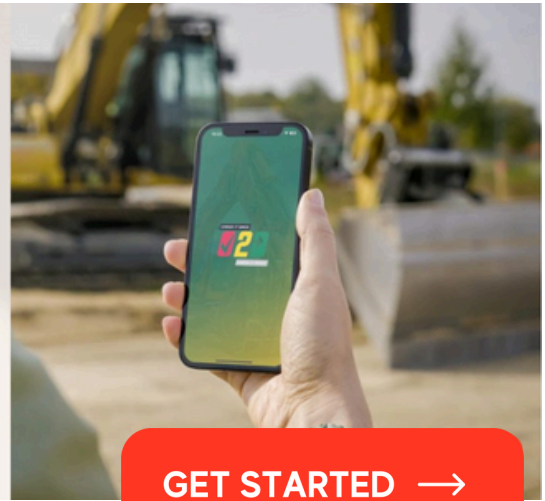
Follow Us



Comply2Go – Smart. Simple. Safe. Compliance Made Easy

## DITCH THE PAPERWORK – GO DIGITAL WITH COMPLY2GO!

[www.comply2go.co.uk](http://www.comply2go.co.uk)



**GET STARTED →**

### BEYOND COMPLIANCE – WHY SITE AUDITS MATTER

True compliance goes beyond ticking boxes—it's about building a culture of safety, accountability, and efficiency across every stage of your project. Regular site audits help identify risks before they become incidents, ensuring every aspect of your project meets and exceeds industry standards. A proactive approach not only keeps your workforce safe but also boosts efficiency and reduces costly delays. Want to know how a well-structured site audit can benefit your projects?

**Find out how we go beyond compliance to create safer, more efficient worksites - Read more here.**

**BLOG**



**Click on this link to read our blog on Preventing Workplace Falls: How Simple Safety Measures Can Protect Lives**

**BLOG**

### PREVENTING SLIPS, TRIPS, AND FALLS IN THE WORKPLACE

Slips, trips, and falls remain the leading cause of non-fatal workplace injuries, accounting for 31% of accidents - (HSE 2023/24). A recent IOSH article highlights the ongoing risks, reinforcing the need for proactive safety measures and compliance with HSE and CDM regulations.

In our March blog, we dive into essential strategies to prevent slips, trips, and falls, enhance workplace safety, and protect workers from avoidable accidents—including how Safety CDM's expertise in risk assessments and safety culture development can help keep your business on track and compliant. From proper site maintenance to effective training and risk mitigation, small changes can make a big difference in reducing workplace incidents.

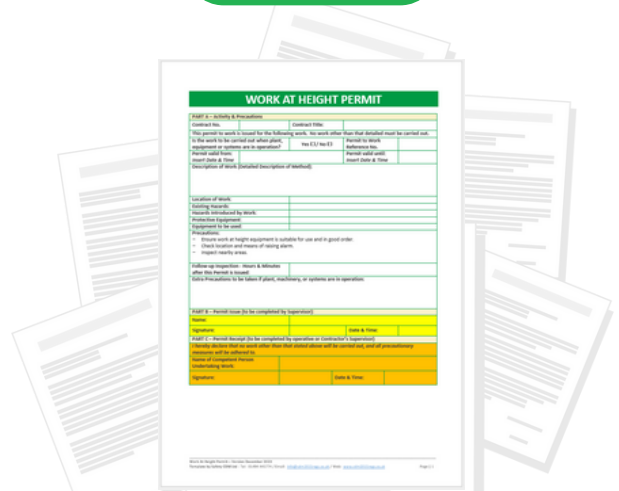
## WORKING AT HEIGHT: UNDERSTANDING THE RISKS & STAYING SAFE

Working at height remains one of the biggest causes of workplace fatalities and serious injuries worldwide. Recent discussions by the IOSH Thought Leadership Panel shed light on key challenges, including gaps in industry guidance, difficulties reaching small and medium-sized enterprises (SMEs), and the need for more targeted interventions.

So, what can be done? Experts agree that improving work-at-height safety requires a combination of better planning, clear documentation, well-maintained equipment, strong supervision, and a culture of safety awareness. However, having the right tools in place is just as important.

To support safer working at height, we're offering a **FREE Permit to Work – Work At Height** template for you to download and use across your sites. This simple but effective document helps ensure that work at height tasks are properly assessed, risks are mitigated, and all necessary precautions are in place before work begins.

FREE DOWNLOAD



**DOWNLOAD YOUR FREE PERMIT TO WORK**

By implementing structured controls and staying up to date with the latest guidance, we can work towards reducing the risks of falls and making work at height safer for everyone.



## NEED HELP WITH THE BUILDING SAFETY ACT & FIRE SAFETY REGULATIONS?

**How the Building Safety Act Affects You** - From Building Control for Higher-Risk Buildings to Gateway Approvals and Mandatory Occurrence Reporting—we're here to help you navigate it all.

**GET IN TOUCH TODAY**



**Call us today: 01494 445774**  
**Email: [info@cdm2015regs.co.uk](mailto:info@cdm2015regs.co.uk)**

✓ Expert Guidance | ✓ Compliance Support | ✓ Peace of Mind

### EXPERT CDM & SAFETY SUPPORT – WE'VE GOT YOU COVERED!

At Safety CDM, we provide a full range of CDM and health & safety services designed to keep your projects compliant, efficient, and safe. Whether you need expert guidance on CDM 2015 regulations, risk assessments, site audits, or construction phase planning, our team is here to help.

- ✓ Full CDM 2015 Compliance
- ✓ Construction Phase Plans & Pre-Construction Information
- ✓ Site Inspections & Safety Audits
- ✓ Risk Assessment Advice & Management Plans
- ✓ Health & Safety Files & Customer Support



**SAFETY CDM LTD**  
DESIGN SMART BUILD SAFE



01494 445774



[info@cdm2015regs.co.uk](mailto:info@cdm2015regs.co.uk)



[www.cdm2015regs.co.uk](http://www.cdm2015regs.co.uk)